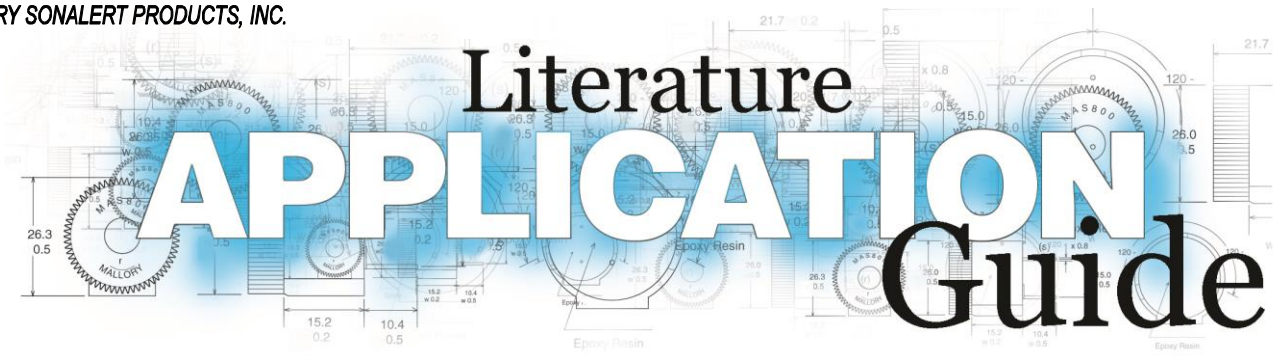
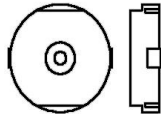




MALLORY SONALERT PRODUCTS, INC.



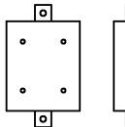
Transducers- External Drive- Piezo



Surface Mount- Piezoelectric
Top Hole- No Wash Label

Surface Mount Transducers (No Circuitry)

Part Number	Sound Level @ 10 cm	Freq. (Hz)	Operating Voltage (Vp-p)	Current (mA)	Dia x Hgt (mm)	Comments
Piezoelectric Transducer- No Circuitry						
AST100Q	80 @ 5Vpp	4000	3 - 15	1.5 @ 5Vpp	17 x 5	Tube
AST100TRQ	80 @ 5Vpp	4000	3 - 15	1.5 @ 5Vpp	17 x 5	T&R



Surface Mount- Piezoelectric
4 Top Holes- No Wash Label

Surface Mount Transducers (No Circuitry)

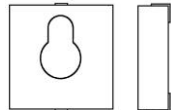
Part Number	Sound Level @ 10 cm	Freq. (Hz)	Operating Voltage (Vp-p)	Current (mA)	L x W x H (mm)	Comments
Piezoelectric Transducer- No Circuitry						
AST1109MLQ	73 @ 5Vpp	4100	1 - 20	1 @ 5Vpp	11 x 9 x 1.7	Cut Tape
AST1109MLTRQ	73 @ 5Vpp	4100	1 - 20	1 @ 5Vpp	11 x 9 x 1.7	T&R
AST1341MACQ	90 @ 12Vpp	4100	1 - 25	8 @ 12Vpp	13 x 13 x 2.5	Cut Tape
AST1341MACTRQ	90 @ 12Vpp	4100	1 - 25	8 @ 12Vpp	13 x 13 x 2.5	T&R
AST1640MACQ	90 @ 12Vpp	4000	3 - 20	8 @ 12Vpp	16 x 16 x 2.5	Cut Tape
AST1640MACTRQ	90 @ 12Vpp	4000	3 - 20	8 @ 12Vpp	16 x 16 x 2.5	T&R



Surface Mount- Piezoelectric
Side Hole- No Wash Label

Surface Mount Transducers (No Circuitry)

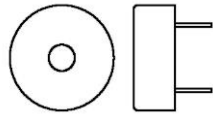
Part Number	Sound Level @ 10 cm	Freq. (Hz)	Operating Voltage (Vp-p)	Current (mA)	L x W x H (mm)	Comments
Piezoelectric Transducer- No Circuitry						
AST0760MCQ	74 @ 12Vpp	6000	1 - 25	6 @ 12Vpp	7.5 x 7.5 x 2	Cut Tape
AST0760MCTRQ	74 @ 12Vpp	6000	1 - 25	6 @ 12Vpp	7.5 x 7.5 x 2	T&R
AST0940MCQ	78 @ 12Vpp	4000	1 - 25	5 @ 12Vpp	9 x 9 x 1.9	Cut Tape
AST0940MCTRQ	78 @ 12Vpp	4000	1 - 25	5 @ 12Vpp	9 x 9 x 1.9	T&R
AST1240MLQ	75 @ 5Vpp	4000	1 - 25	5 @ 5Vpp	12 x 12 x 3	Cut Tape
AST1240MLTRQ	75 @ 5Vpp	4000	1 - 25	5 @ 5Vpp	12 x 12 x 3	T&R
AST1628MAQ	75 @ 3Vpp	4000	1 - 25	5 @ 3Vpp	16 x 16 x 2.9	Cut Tape
AST1628MATRQ	75 @ 3Vpp	4000	1 - 25	5 @ 3Vpp	16 x 16 x 2.9	T&R



Surface Mount- Piezoelectric
Top Hole with Wash Label

Surface Mount Transducers (No Circuitry)

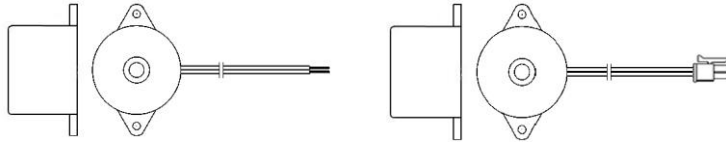
Part Number	Sound Level @ 10 cm	Freq. (Hz)	Operating Voltage (Vp-p)	Current (mA)	L x W x H (mm)	Comments
Piezoelectric Transducer- No Circuitry						
AST1440MAQ	75 @ 5Vpp	4000	1 - 20	2 @ 5Vpp	14.9 x 14.1 x 4.5	Sealed; Cut Tape
AST1440MATRQ	75 @ 5Vpp	4000	1 - 20	2 @ 5Vpp	14.9 x 14.1 x 4.5	Sealed; T&R
AST1575BMAQ	85 @ 7Vpp	3650	1 - 30	5 @ 7Vpp	14.8 x 14.8 x 7.5	Sealed; Cut Tape
AST1575BMATRQ	85 @ 7Vpp	3650	1 - 30	5 @ 7Vpp	14.8 x 14.8 x 7.5	Sealed; T&R
AST1750MAQ	80 @ 5Vpp	4000	1 - 20	2.5 @ 5Vpp	17 x 17 x 5	Sealed; Cut Tape
AST1750MATRQ	80 @ 5Vpp	4000	1 - 20	2.5 @ 5Vpp	17 x 17 x 5	Sealed; T&R



Piezoelectric- PC Pins

Piezoelectric Transducers- External Drive

Part Number	Sound Level @ 10cm 5Vpp Sq. Wave	Freq. (Hz)	Operating Voltage (Vpp)	Current @ 5Vpp (mA)	Dia x Hgt (mm)	PC Pin Pitch (mm c/c)	Comments
Piezoelectric Transducer- External Drive (No Feedback)							
PT-1520PQ	72 @ 3Vpp	2000	1 - 25	1.5 @ 3Vpp	17 x 7.8	10	
PT-4176PQ	75	750	1 - 30	1.5	50 x 13	43	Offset Terms
PT-1241PFQ	80 @ 3Vpp	4000	1 - 30	1.5 @ 3Vpp	12.5 x 6	5	
PT-2020PQ	80	2000	1 - 30	1.5	22x7.2x26.6	12.5	Edge Mount
PT-2030P-PQ	80	2000	1 - 25	1.5	26 x 16	23	Offset Terms
PT-1245P-PQ	80	4000	1 - 25	1.5	12.6 x 6.9	7.6	
PT-1245P-P7.5Q	80	4000	1 - 25	1.5	12.6 x 6.9	7.6	7.5mm Pin Len
PT-1240PEQ	80	4000	1 - 30	2	13.5 x 6.7	7.5	Sealed
PT-1540PQ	80	4000	1 - 25	1.5	17 x 9	10	
PT-1240PQ	80	4100	1 - 20	2	13.8 x 8.3	7.6	
PT-1250PQ	80	5000	1 - 25	1.5	13.8 x 4	7.6	
PT-2060PQ	80	6000	1 - 30	1.5	24 x 5.5	10	
PT-1140PEQ	85 @ 9Vpp	4000	1 - 20	7 @ 9Vpp	12 x 5.5	6.5	
PT-3110PQ	85	1100	1 - 30	2	34 x 10.3	25.4	
PT-1340P-PQ	85	4000	1 - 25	1.5	14 x 7.7	5	
PT-1340P-7.6-PQ	85	4000	1 - 25	1.5	14 x 7.7	7.6	
PT-1340P-10-PQ	85	4000	1 - 25	1.5	14 x 7.7	10	
PT-1540PM-3.5Q	85	4000	1 - 25	1.5	17 x 9	10	
PT-4175PQ	87	750	1 - 30	1.4	44 x 14	25.4	
PT-3110P-05Q	90	1100	1 - 30	2	34.5 x 10.3	25.4	
PT-2726PQ	90	2500	1 - 30	1.5	30 x 10	15	
PT-2725PQ	90	2500	1 - 30	1.5	30 x 12	15	
PT-2130PQ	90	3000	1 - 30	5	24 x 9.5	15	
PT-2130PSQ	90	3000	1 - 30	5	24 x 9.5	12	
PT-2736PQ	90	3500	1 - 30	5	30 x 10	18	
PT-2040PQ	90	4000	1 - 30	1.5	22 x 9	10	
PT-3529PQ	95	2900	1 - 30	5	42 x 16	25.4	
PT-4532PLQ	103	3200	3 - 50	30	54 x 18.8	46.5	Blade Terms

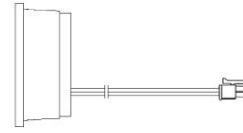
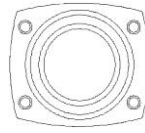
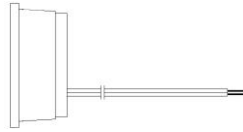
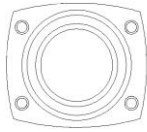


**Flange Mount-
Bare Wires or
Connector**

Flange Mount Transducer- External Drive

Part Number	Sound Level @ 10 cm 5Vpp Sq. Wave	Freq. (Hz)	Operating Voltage (Vpp)	Current @ 5Vpp (mA)	Size Dia x Hgt (mm)	Flange Hole Spacing (mm c/c)	Bare Wires or Connector	Comments
Piezoelectric- External Drive (No Feedback)								
PT-1540WQ	80	4000	1 - 25	1.5	17 x 8.5	23	Bare Wires	
PT-1540WQ-MX	80	4000	1 - 25	1.5	17 x 8.5	23	Connector	
PT-1250WQ	80	4800	1 - 30	1.5	13.8 x 4	N/A	Bare Wires	No Flange
PT-1250WQ-MX	80	4800	1 - 30	1.5	13.8 x 4	N/A	Connector	No Flange
PT-1550WQ	80	5000	1 - 25	1.5	16.5 x 4	N/A	Bare Wires	No Flange
PT-1550WQ-MX	80	5000	1 - 25	1.5	16.5 x 4	N/A	Connector	No Flange
PT-3110WQ	85	1100	1 - 30	2	34.5 x 9	40	Bare Wires	
PT-3110WQ-MX	85	1100	1 - 30	2	34.5 x 9	40	Connector	
PT-4175WQ	87	750	1- 30	1.5	44 x 14	52	Bare Wires	Flange at Top
PT-4175WQ-MX	87	750	1- 30	1.5	44 x 14	52	Connector	Flange at Top
PT-2725WQ	90	2500	1 - 30	1.5	30 x 12	35	Bare Wires	
PT-2725WQ-MX	90	2500	1 - 30	1.5	30 x 12	35	Connector	
PT-2130WQ	90	3000	1 - 30	3	24 x 9.5	29	Bare Wires	
PT-2130WQ-MX	90	3000	1 - 30	3	24 x 9.5	29	Connector	
PT-2736WQ	90	3500	1 - 30	5	30 x 10	39	Bare Wires	
PT-2736WQ-MX	90	3500	1 - 30	5	30 x 10	39	Connector	
PT-2038WQ	90	3800	1 - 30	5	24 x 5	29	Bare Wires	
PT-2038WQ-MX	90	3800	1 - 30	5	24 x 5	29	Connector	
PT-2745WQ	90	4500	1 - 30	1.5	30 x 5	35	Bare Wires	
PT-2745WQ-MX	90	4500	1 - 30	1.5	30 x 5	35	Connector	
PT-2746WQ	90	4500	1 - 30	1.5	30 x 5	N/A	Bare Wires	No Flange
PT-2746WQ-MX	90	4500	1 - 30	1.5	30 x 5	N/A	Connector	No Flange
PT-2060WQ	90	6000	1 - 30	1.5	24 x 5	29	Bare Wires	
PT-2060WQ-MX	90	6000	1 - 30	1.5	24 x 5	29	Connector	
PT-3529WQ	95	2900	1 - 30	5	42 x 16	50	Bare Wires	
PT-3529WQ-MX	95	2900	1 - 30	5	42 x 16	50	Connector	

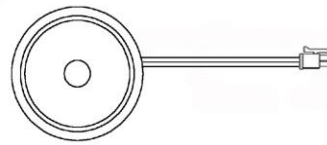
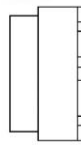
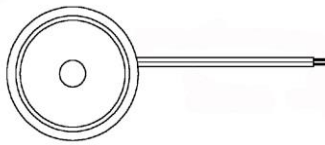
- Models with “-MX” Suffix Include Molex Micro Fit 3.0 Connector P/N 43025-0200
- For Mating Connector, Use Molex P/N 43020-0201



Flange Mount- Bare Wires or Connector

Part Number	Sound Level @ 10 cm 5Vpp Sq. Wave	Freq. (Hz)	Operating Voltage (Vpp)	Current @ 5Vpp (mA)	Size L x W x H (mm)	Flange Hole Spacing (mm c/c)	Bare Wires or Connector	Comments
Piezoelectric- External Drive (No Feedback)								
PT-520-SQ	85	4400	1 - 30	3	41 x 36 x 14	See Spec.	Bare Wires	Front Flange
PT-520-SQ-MX	85	4400	1 - 30	3	41 x 36 x 14	See Spec.	Connector	Front Flange

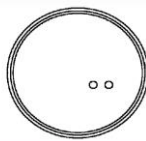
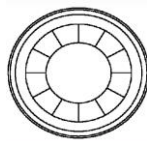
- Models with “-MX” Suffix Include Molex Micro Fit 3.0 Connector P/N 43025-0200
- For Mating Connector, Use Molex P/N 43020-0201



Press Fit- Bare Wires or Connector

Part Number	Sound Level @ 10 cm 5Vpp Sq. Wave	Freq. (Hz)	Operating Voltage (Vpp)	Current @ 5Vpp (mA)	Size L x W x H (mm)	Bare Wires or Connector	Comments
Piezoelectric- External Drive (No Feedback)							
PT-723B-76Q	90	2600	1 - 30	5	26 x 17	Bare Wires	No Flange/Press Fit
PT-723B-76Q-MX	90	2600	1 - 30	5	26 x 17	Connector	No Flange/Press Fit

- Models with “-MX” Suffix Include Molex Micro Fit 3.0 Connector P/N 43025-0200
- For Mating Connector, Use Molex P/N 43020-0201



Solder Pads

Part Number	Sound Level @ 10 cm 5Vpp Sq. Wave	Freq. (Hz)	Operating Voltage (Vpp)	Current @ 5Vpp (mA)	Size L x W x H (mm)	Comments
Piezoelectric- External Drive (No Feedback)						
PT-593SQ	99 dBa @ 5 Vpp 123 dBa @ 150 Vpp	3500	5 - 150	4 @ 5 Vpp 47 @ 150 Vpp	54.5 x 23.5	Solder Pads

Call 317-612-1000 or Visit www.mallory-sonalert.com for More Details