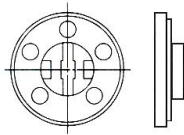


MALLORY

MALLORY SONALERT PRODUCTS, INC.

Literature APPLICATION Guide



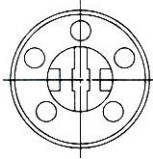
Round Bare Miniature Speaker

Bare Mylar Speaker- Round

Part Number	Imp. (Ω)	Rated Power (Watts)	Max Power (Watts)	Frequency Range (kHz)	Sound Level Rated Wattage per 0.1 meters	Sound Level 1 Watt per 1 meter	Frame Matl.	Size Dia x Hgt (mm)
Metal Frame								
PSR10N08AK	8	0.30	0.50	1.2 to 20	86 @ 0.3W/0.1m	72 @ 1W/1m	Metal	10 x 2.9
PSR12N08AK	8	0.50	0.60	1.0 to 20	90 @ 0.5W/0.1m	74 @ 1W/1m	Metal	12 x 3.0
PSR-13N08A-JQ	8	0.25	0.30	1.8 to 7.0	89 @ 0.25W/0.1m	75 @ 1W/1m	Metal	13 x 5.0
PSR16N08AK	8	0.3	0.5	0.6 to 20	82 @ 0.3W/0.1m	69 @ 1W/1m	Metal	16 x 2.55
PSR-18N08A-JQ	8	0.25	0.30	1.8 to 4.0	98 @ 0.25W/0.1m	84 @ 1W/1m	Metal	18 x 3.0
PSR-20N08A-JQ	8	0.25	0.30	0.9 to 5.0	94 @ 0.25W/0.1m	80 @ 1W/1m	Metal	20 x 3.0
PSR20N08AK	8	0.30	0.50	0.56 to 7.0	92 @ 0.3W/0.1m	78 @ 1W/1m	Metal	20 x 3.1
PSR26N08AK	8	0.20	0.30	0.52 to 6.5	92 @ 0.2W/0.1m	79 @ 1W/1m	Metal	26 x 4.1
PSR-28N08A-JQ	8	0.25	0.50	0.7 to 8.0	103 @ 0.25W/0.1m	89 @ 1W/1m	Metal	28 x 4.3
PSR28N08AK	8	0.50	1.0	0.6 to 6.0	95 @ 0.5W/0.1m	79 @ 1W/1m	Metal	28 x 4.6
PSR30N08AK	8	0.10	0.20	0.46 to 5.0	88 @ 0.1W/0.1m	78 @ 1W/1m	Metal	29.7 x 5.8
PSR-36N08A-JQ	8	0.25	0.50	0.55 to 7.0	103 @ 0.25W/0.1m	89 @ 1W/1m	Metal	36 x 4.8
PSR36N08AK	8	1.0	1.5	0.57 to 5.0	104 @ 1W/0.1m	82 @ 1W/1m	Metal	36 x 4.8
PSR-40N08A05-JQ	8	0.25	0.50	0.5 to 5.0	103 @ 0.25W/0.1m	89 @ 1W/1m	Metal	40 x 5.0
PSR40N08AK	8	1.0	2.0	0.56 to 6.0	102 @ 1W/0.1m	83 @ 1W/1m	Metal	40 x 4.4
PSR40N08A01K	8	1.0	2.0	0.5 to 10	87 @ 1W/0.1m	67 @ 1W/1m	Metal	40 x 6.3
PSR44N08AK	8	0.50	0.60	0.6 to 4.0	99 @ 0.5W/0.1m	83 @ 1W/1m	Metal	44.5 x 9.5
PSR-45N08A-JQ	8	0.25	0.30	0.4 to 6.0	102 @ 0.25W/0.1m	88 @ 1W/1m	Metal	45 x 4.8
PSR-57N08A01-AQ	8	0.50	1.0	0.6 to 4.0	106 @ 0.25W/0.1m	92 @ 1W/1m	Metal	57 x 8.4
PSR66N08AK	8	1.5	3.0	0.5 to 13	111 @ 1.5W/0.1m	89 @ 1W/1m	Metal	66 x 23
Plastic Frame								
PSR-20F08S-JQ	8	0.25	0.30	1.3 to 6.0	94 @ 0.25W/0.1m	80 @ 1W/1m	Plastic	20 x 5.0
PSR-27N08S01-JQ	8	0.25	0.50	0.75 to 7.0	98 @ 0.25W/0.1m	84 @ 1W/1m	Plastic	27 x 5.0
PSR-23F08S-JQ	8	0.25	0.30	0.9 to 6.5	95 @ 0.25W/0.1m	81 @ 1W/1m	Plastic	23 x 5.0
PSR-29F08S02-JQ	8	0.25	0.50	0.8 to 4.5	98 @ 0.25W/0.1m	84 @ 1W/1m	Plastic	29 x 9.0

Bare Mylar Speaker- Round (Con't)

Part Number	Imp. (Ω)	Rated Power (W)	Max Power (W)	Frequency Range (kHz)	Sound Level Rated Wattage per 0.1 meters	Sound Level 1 Watt per 1 meter	Frame Matl.	Size Dia x Hgt (mm)
PSR30F64SK	64	0.10	0.20	0.43 to 20	88 @ 0.1W/0.1m	78 @ 1W/1m	Plastic	29.7 x 5.8
PSR-40F08S02-JQ	8	0.25	0.50	0.8 to 5.0	100 @ 0.25W/0.1m	86 @ 1W/1m	Plastic	40 x 7.5
PSR-50F08S-JQ	8	0.25	0.50	0.5 to 5.0	105 @ 0.3W/0.1m	91 @ 1W/1m	Plastic	50 x 10.5
PSR50F25SK	25	0.20	.050	0.35 to 12	92 @ 0.2W/.1m	79 @ 1W/1m	Plastic	50 x 8.5
PSR-57F08S02-JQ	8	0.25	0.50	0.35 to 5.0	104 @ 0.3W/0.1m	90 @ 1W/1m	Plastic	57 x 12.5



Round Miniature Speaker with Connector

Mylar Speaker- Round with Connector

Part Number	Imp. (Ω)	Rated Power (W)	Max Power (W)	Freq. Range (kHz)	Sound Level Rated Wattage per 0.1 meters	Sound Level 1 Watt per 1 meter	Frame Matl.	Size Dia x Hgt (mm)
Metal Frame with Connector								
PSR10N08AK-MX	8	0.30	0.50	1.2 to 20	86 @ 0.3W/0.1m	72 @ 1W/1m	Metal	10 x 2.9
PSR12N08AK-MX	8	0.50	0.60	1.0 to 20	90 @ 0.5W/0.1m	74 @ 1W/1m	Metal	12 x 3.0
PSR-13N08A-JQ-MX	8	0.25	0.30	1.8 to 7.0	89 @ 0.25W/0.1m	75 @ 1W/1m	Metal	13 x 5.0
PSR16N08AK-MX	8	0.3	0.5	0.6 to 20	82 @ 0.3W/0.1m	69 @ 1W/1m	Metal	16 x 2.55
PSR-18N08A-JQ-MX	8	0.25	0.30	1.8 to 4.0	98 @ 0.25W/0.1m	84 @ 1W/1m	Metal	18 x 3.0
PSR-20N08A-JQ-MX	8	0.25	0.30	0.9 to 5.0	94 @ 0.25W/0.1m	80 @ 1W/1m	Metal	20 x 3.0
PSR20N08AK-MX	8	0.30	0.50	0.56 to 7.0	92 @ 0.3W/0.1m	78 @ 1W/1m	Metal	20 x 3.1
PSR26N08AK-MX	8	0.20	0.30	0.52 to 6.5	92 @ 0.2W/0.1m	79 @ 1W/1m	Metal	26 x 4.1
PSR-28N08A-JQ-MX	8	0.25	0.50	0.7 to 8.0	103 @ 0.25W/0.1m	89 @ 1W/1m	Metal	28 x 4.3
PSR28N08AK-MX	8	0.50	1.0	0.6 to 6.0	95 @ 0.5W/0.1m	79 @ 1W/1m	Metal	28 x 4.6
PSR30N08AK-MX	8	0.10	0.20	0.46 to 5.0	88 @ 0.1W/0.1m	78 @ 1W/1m	Metal	29.7 x 5.8
PSR-36N08A-JQ-MX	8	0.25	0.50	0.55 to 7.0	103 @ 0.25W/0.1m	89 @ 1W/1m	Metal	36 x 4.8
PSR36N08AK-MX	8	1.0	1.5	0.57 to 5.0	104 @ 1W/0.1m	82 @ 1W/1m	Metal	36 x 4.8
PSR-40N08A05-JQ-MX	8	0.25	0.50	0.5 to 5.0	103 @ 0.25W/0.1m	89 @ 1W/1m	Metal	40 x 5.0
PSR40N08AK-MX	8	1.0	2.0	0.56 to 6.0	102 @ 1W/0.1m	83 @ 1W/1m	Metal	40 x 4.4
PSR40N08A01K-MX	8	1.0	2.0	0.5 to 10	87 @ 1W/0.1m	67 @ 1W/1m	Metal	40 x 6.3
PSR44N08AK-MX	8	0.50	0.60	0.6 to 4.0	99 @ 0.5W/.1m	83 @ 1W/1m	Metal	44.5 x 9.5
PSR-45N08A-JQ-MX	8	0.25	0.30	0.4 to 6.0	102 @ 0.25W/0.1m	88 @ 1W/1m	Metal	45 x 4.8
PSR-57N08A01-AQ-MX	8	0.50	1.0	0.6 to 4.0	106 @ 0.25W/0.1m	92 @ 1W/1m	Metal	57 x 8.4
PSR66N08AK-MX	8	1.5	3.0	0.5 to 13	111 @ 1.5W/0.1m	89 @ 1W/1m	Metal	66 x 23

Notes:

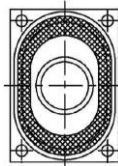
- Connector assembly consists of 7.5 inch twisted wire and Molex Microfit 3.0 Model No. 43025-0200
- For mating connector, use Molex Model No. 43020-0201

Mylar Speaker- Round with Connector (Con't)

Part Number	Imp. (Ω)	Rated Power (W)	Max Power (W)	Freq. Range (kHz)	Sound Level Rated Wattage per 0.1 meters	Sound Level 1 Watt per 1 meter	Frame Matl.	Size Dia x Hgt (mm)
Plastic Frame with Connector								
PSR-20F08S-JQ-MX	8	0.25	0.30	1.3 to 6.0	94 @ 0.25W/0.1m	80 @ 1W/1m	Plastic	20 x 5.0
PSR-27N08S01-JQ-MX	8	0.25	0.50	0.75 to 7.0	98 @ 0.25W/0.1m	84 @ 1W/1m	Plastic	27 x 5.0
PSR-23F08S-JQ-MX	8	0.25	0.30	0.9 to 6.5	95 @ 0.25W/0.1m	81 @ 1W/1m	Plastic	23 x 5.0
PSR-29F08S02-JQ-MX	8	0.25	0.50	0.8 to 4.5	98 @ 0.25W/0.1m	84 @ 1W/1m	Plastic	29 x 9.0
PSR30F64SK-MX	64	0.10	0.20	0.43 to 20	88 @ 0.1W/0.1m	78 @ 1W/1m	Plastic	29.7 x 5.8
PSR-40F08S02-JQ-MX	8	0.25	0.50	0.8 to 5.0	100 @ 0.25W/0.1m	86 @ 1W/1m	Plastic	40 x 7.5
PSR-50F08S-JQ-MX	8	0.25	0.50	0.5 to 5.0	105 @ 0.3W/0.1m	91 @ 1W/1m	Plastic	50 x 10.5
PSR50F25SK-MX	25	0.20	.050	0.35 to 12	92 @ 0.2W/.1m	79 @ 1W/1m	Plastic	50 x 8.5
PSR-57F08S02-JQ-MX	8	0.25	0.50	0.35 to 5.0	104 @ 0.3W/0.1m	90 @ 1W/1m	Plastic	57 x 12.5

Notes:

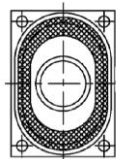
- Connector assembly consists of 7.5 inch twisted wire and Molex Microfit 3.0 Model No. 43025-0200
- For mating connector, use Molex Model No. 43020-0201



Square Bare Miniature Speakers- Bracket Mount

Square Bare Mylar Speaker- Bracket Mount

Part Number	Imp. (Ω)	Rated Power (W)	Max Power (W)	Freq. Range (kHz)	Sound Level Rated Wattage per 0.1 meters	Sound Level 1 Watt per 1 meter	Frame Matl.	Size L x W x H (mm)
Metal Frame								
PSR5151N08AK	8	3.0	4.0	0.5 to 6.0	102 @ 3W/0.1m	77 @ 1W/1m	Metal	50.5 x 50.5 x 18.7
PSR7777N08AK	8	2.0	3.0	0.42 to 9.0	107 @ 2W/0.1m	84 @ 1W/1m	Metal	77 x 77 x 24
PSR8787N08AK	8	12	15	0.5 to 7.5	121 @ 12W/0.1m	90 @ 1W/1m	Metal	87 x 87 x 34.2
Plastic Frame								
PSR4028F08511.5K	8	1.0	2.0	0.39 to 15	97 @ 1W/0.1m	78 @ 1W/1m	Plastic	40 x 28.5 x 11.5



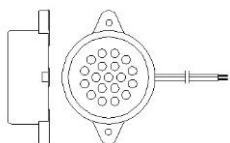
Square Speakers- Bracket Mount with Connector

Square Mylar Speaker- Bracket Mount- w/Connector

Part Number	Imp. (Ω)	Rated Power (W)	Max Power (W)	Freq. Range (kHz)	Sound Level Rated Wattage per 0.1 meters	Sound Level 1 Watt per 1 meter	Frame Matl.	Size L x W x H (mm)
Metal Frame with Connector								
PSR5151N08AK-MX	8	3.0	4.0	0.5 to 6	102 @ 3W/0.1m	77 @ 1W/1m	Metal	50.5 x 50.5 x 18.7
PSR7777N08AK-MX	8	2.0	3.0	0.42 to 9	107 @ 2W/0.1m	84 @ 1W/1m	Metal	77 x 77 x 24
PSR8787N08AK-MX	8	12	15	0.5 to 7.5	121 @ 12W/0.1m	90 @ 1W/1m	Metal	87 x 87 x 34.2
Plastic Frame with Connector								
PSR4028F08511.5K-MX	8	1.0	2.0	0.39 to 15	97 @ 1W/0.1m	78 @ 1W/1m	Plastic	40 x 28.5 x 11.5

Notes:

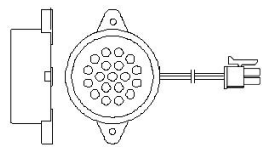
- Connector assembly consists of 7.5 inch twisted wire and Molex Microfit 3.0 Model No. 43025-0200
- For mating connector, use Molex Model No. 43020-0201



Flange Mount Speaker with Wires

Mylar Speaker- Flange Mount with Wires

Part Number	Impedance (Ω)	Rated Power (Watts)	Max Power (Watts)	Frequency Range (Hz)	Sound Level @ 10cm	Size Dia x Hgt (mm)	Flange Spacing (mm c/c)
PB-2712WQ	8	0.15	0.2	1250 ± 200	85	30 x 13.5	32
PB-2015WQ	8	0.10	0.15	1500 ± 200	75	23 x 8.8	28.5



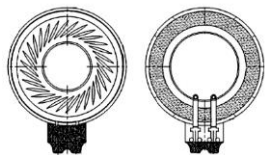
Flange Mount Speaker with Connector

Mylar Speaker- Flange Mount with Connector

Part Number	Impedance (Ω)	Rated Power (Watts)	Max Power (Watts)	Frequency Range (Hz)	Sound Level @ 10cm	Size Dia x Hgt (mm)	Flange Spacing (mm c/c)
PB-2712WQ-MX	8	0.15	0.2	1250 ± 200	85	30 x 13.5	32
PB-2015WQ-MX	8	0.10	0.15	1500 ± 200	75	23 x 8.8	28.5

Notes:

- Connector assembly consists of 3.5 in wire and Molex Microfit 3.0 Model No. 43025-0200
- For mating connector, use Molex Model No. 43020-0201



Bare Miniature Mylar Speaker with Spring Clips

Bare Miniature Mylar Speaker with Spring Clips

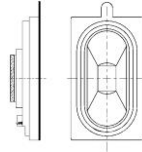
Part Number	Imp. (Ω)	Rated Power (W)	Max Power (W)	Freq. Range (kHz)	Sound Level Rated Wattage per 0.1 meters	Sound Level 1 Watt per 1 meter	Frame Matl.	Size Dia x Hgt (mm)	Packaging
PSR23N50AK	50	0.6	1.0	0.5 to 10	96 @ 0.6W/0.1m	78 @ 1W/1m	Metal	23 x 4.1	Cut Tape
PSR23N50ATRK	50	0.6	1.0	0.5 to 10	96 @ 0.6W/0.1m	78 @ 1W/1m	Metal	23 x 4.1	Tape-n-Reel



PC Pin Mounted Speaker with Snap-in Tabs

PC Pin Mounted Mylar Speaker with Snap-in Tabs

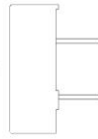
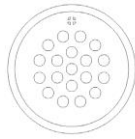
Part Number	Imp. (Ω)	Rated Power (W)	Max Power (W)	Freq. Range (kHz)	Sound Level Rated Wattage per 0.1 meters	Sound Level 1 Watt per 1 meter	Frame Matl.	Size L x W x H (mm)
PSR37N45SK	45	0.20	0.40	0.48 to 10	92 @ 0.2W/0.1m	79 @ 1W/1m	Plastic	37 x 22



Square Bare Miniature Speaker- Press Fit

Square Bare Miniature Mylar Speaker- PCB Mount

Part Number	Imp. (Ω)	Rated Power (W)	Max Power (W)	Freq. Range (kHz)	Sound Level Rated Wattage per 0.1 meters	Sound Level 1 Watt per 1 meter	Frame Matl.	Size L x W x H (mm)
PSR3520F08S7K	8	2.0	2.5	0.67 to 10	98 @ 2W/0.1m	75 @ 1W/1m	Plastic	35 x 20 x 7



PC Pin Mount Speaker

Mylar Speaker- PC Pin Mount

Part Number	Impedance (Ω)	Rated Power (Watts)	Max Power (Watts)	Frequency Range (Hz)	Sound Level @ 10cm	Size Dia x Hgt (mm)	PC Pin Spacing (mm c/c)
PB-1517PK	8	0.30	0.50	1700 ± 200	87	15 x 17.5	7.6
PB-1715PK	8	0.20	0.50	1500 ± 200	87	17 x 8.0	7.6
PB-2315PK	8	0.10	0.15	1500 ± 200	78	23 x 8.4	10
PB-2015PQ	8	0.10	0.15	1500 ± 200	75	23 x 8.8	10
PB-2712PQ	8	0.15	0.2	1250 ± 200	85	30 x 13.5	15
PB-3212PK	8	0.10	0.20	1250 ± 200	95	31.8 x 15	17.5

Call 317-612-1000 or Visit www.mallory-sonalert.com for More Details